

The figures for the article: “A proposed location for Sodom from a Quranic interpretation” (By Omar Abur-Robb, omr-mhmd.yolasite.com), which is intended to be published in Bart Ehrman Blog. [All the figures here are from [Google-Earth](#)].

Figure-1: Notice the traces of the torrential rains in the landscape through the thousands of years before, and notice that there are two white lines crossing these traces.



Figure-2: Same as figure-1 but with two lines (Blue and Orange) highlighting the crossing white lines. These white lines are actually the ancient caravan routes that was marked by the steps of thousands and thousands of camels in the past thousands of years.

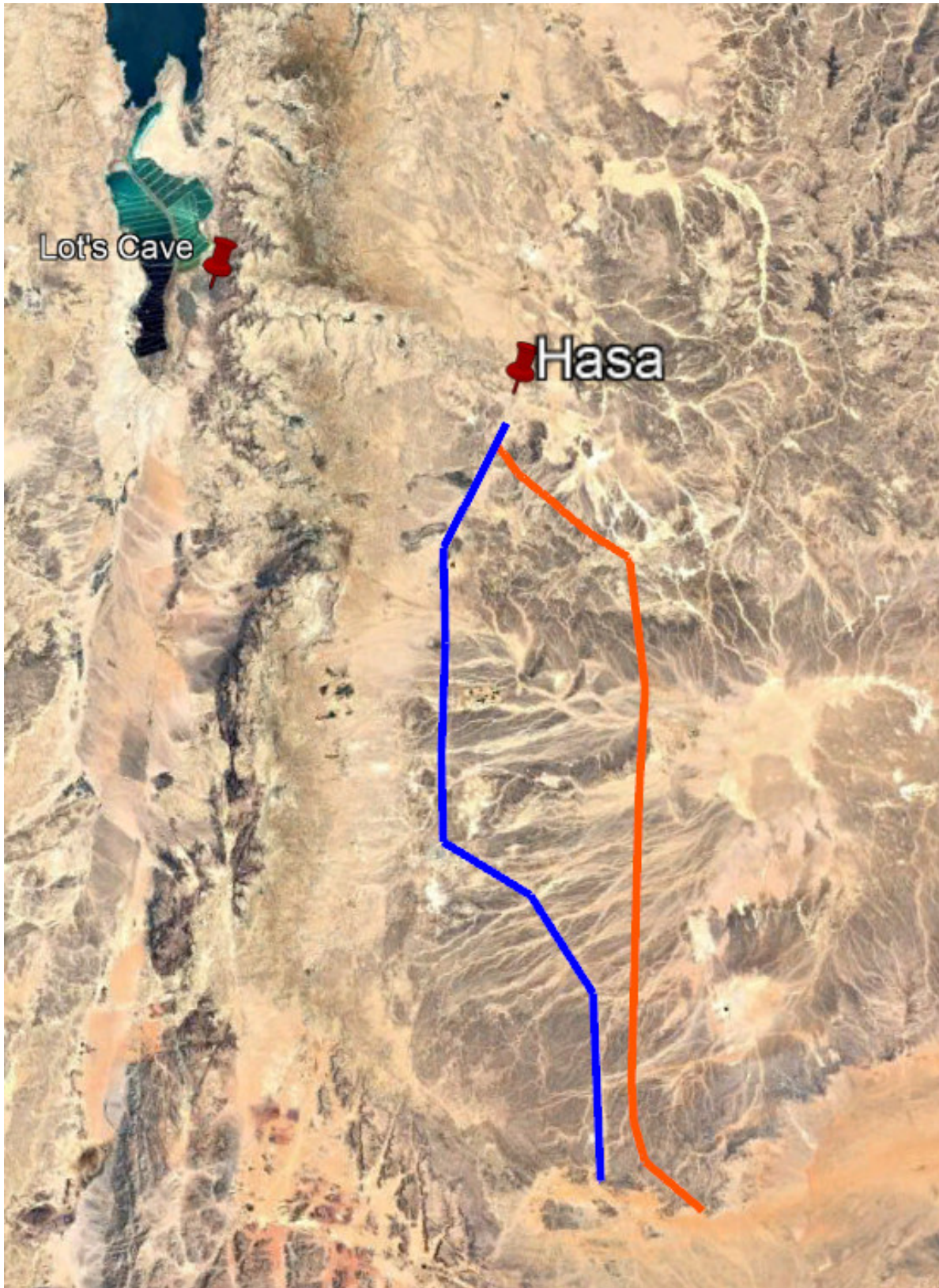


Figure-3: Points X (30 45 30 , 35 55 47), Y (30 33 09 , 36 07 25) and Z (30 33 36 , 36 09 34) as explained in the article. When you copy these coordinates in Google Earth/Map then make sure that there is a space before and after the comma.

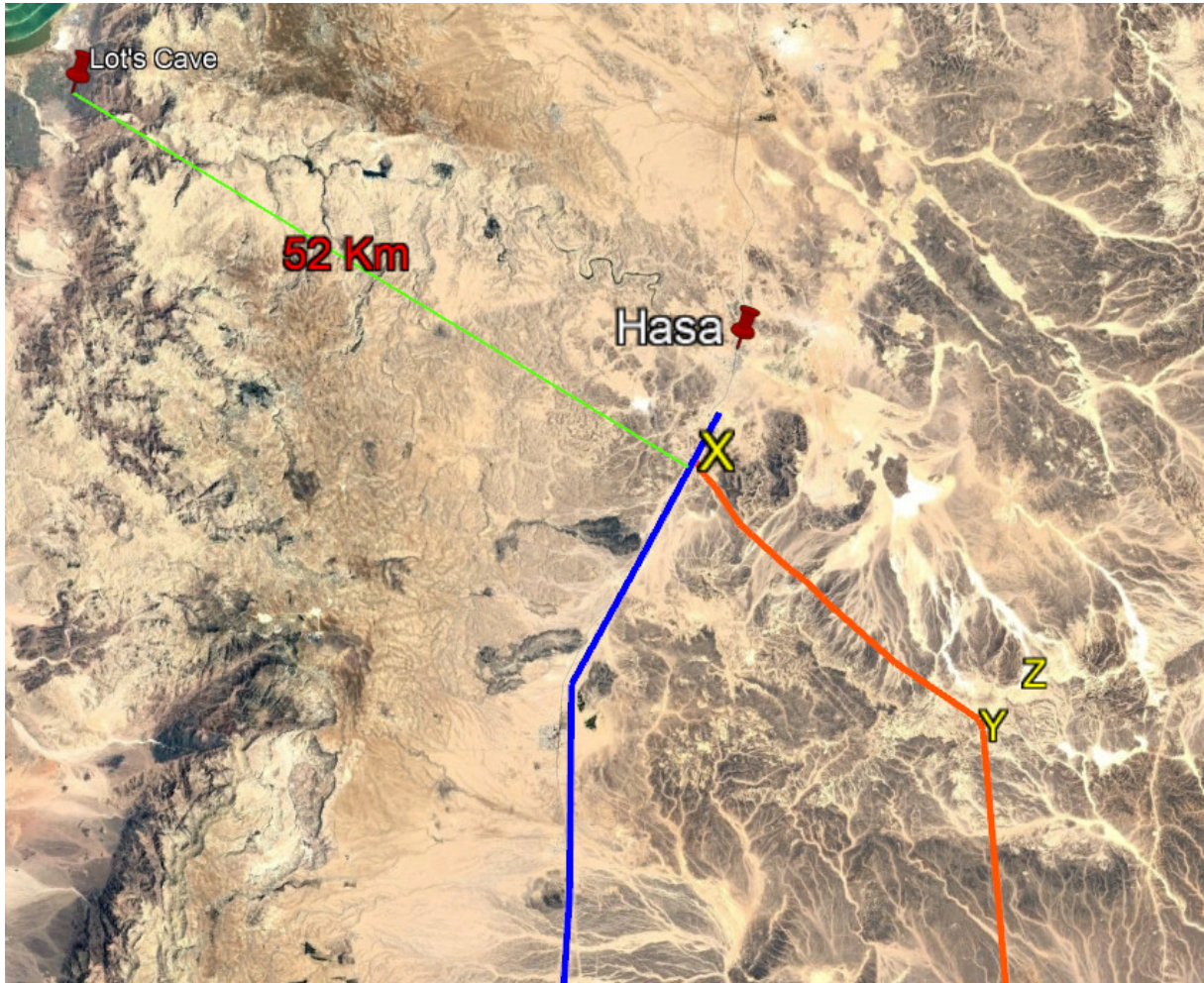


Figure-4: Zoomed view for figure-3.

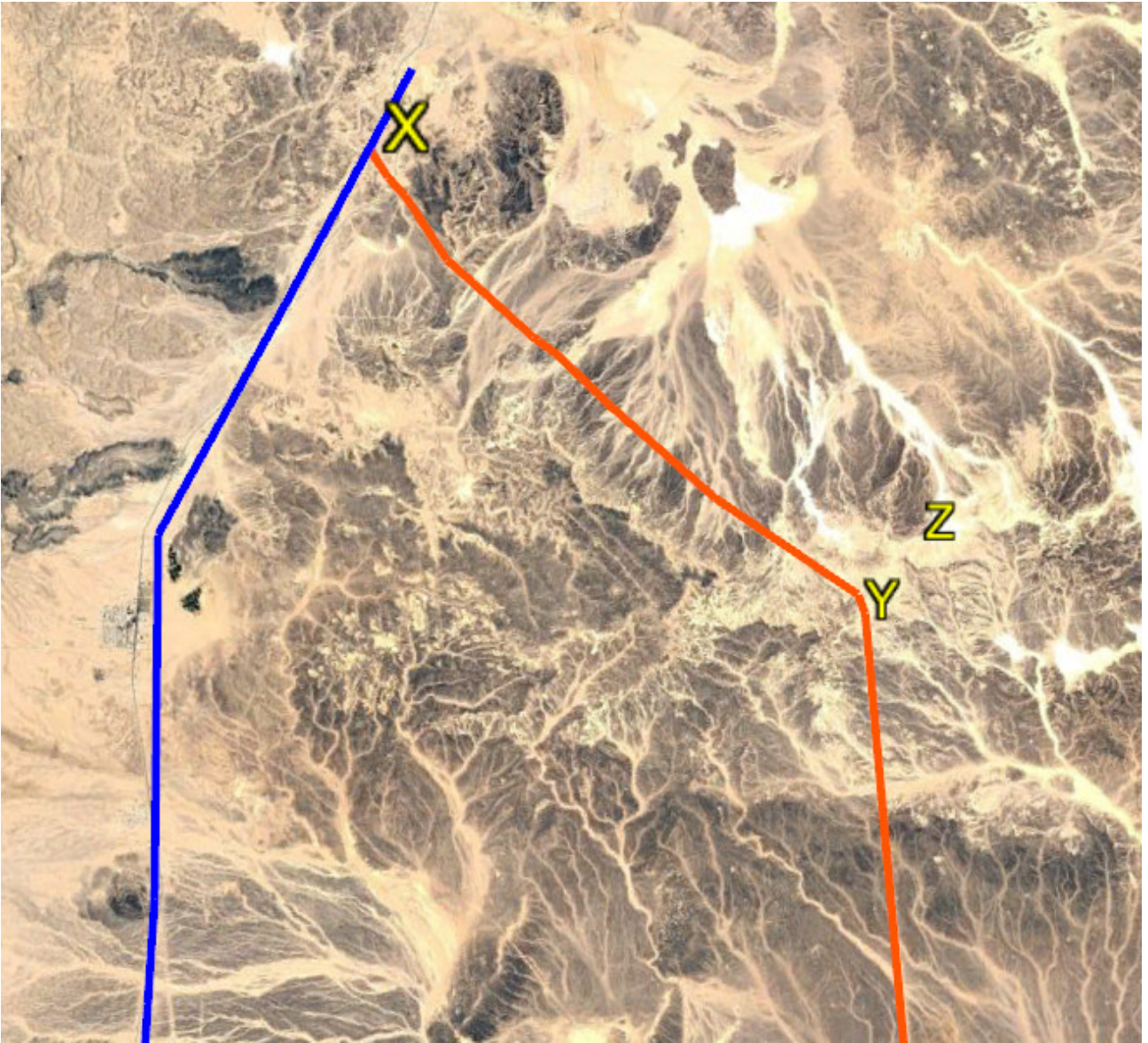


Figure-5: the same as figure-4 without the colors.

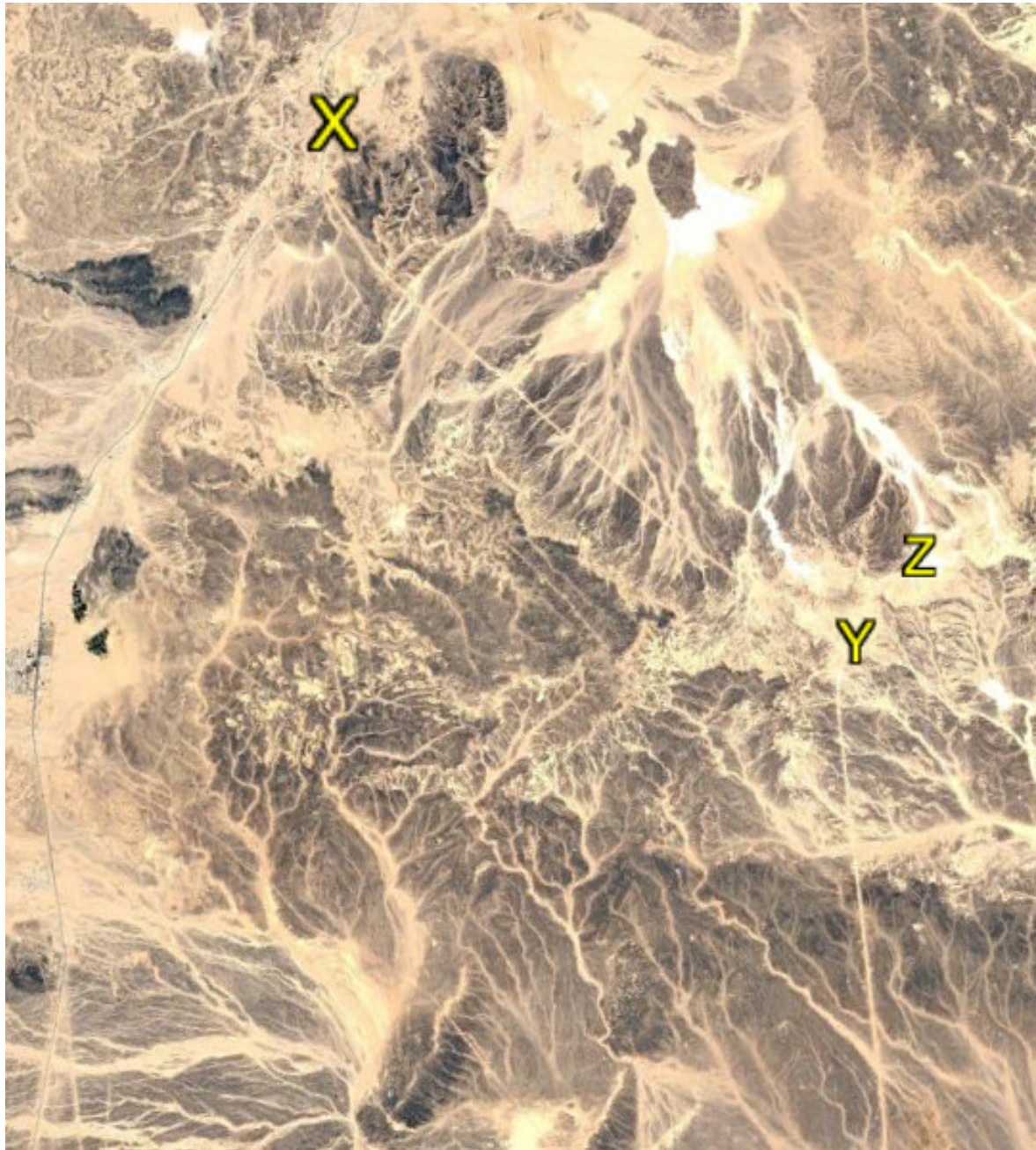


Figure-6: Point Z (30 33 36 , 36 09 34) in the article, which represents a funny random formation from nature caused the thousands of years of erosions which almost look like a face looking at point Y. Notice the thin caravan ancient route below the face coming from the east.

